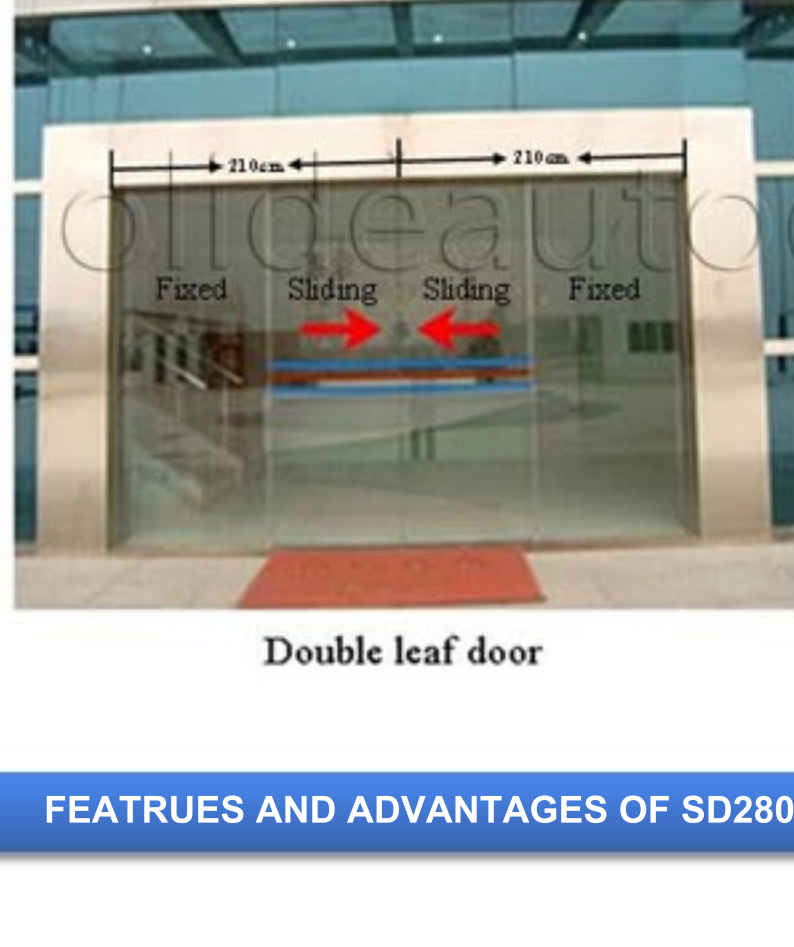


HOW TO CHOOSE THE CORRECT SIZE FOR YOUR DOOR?

Our standard size for the cover and transmission rail is 2*210cm, it is just like the picture one double leaf door shows. If door size is beyond it, or if it is single leaf door, please contact us to choose the correct size for you.



Double leaf door

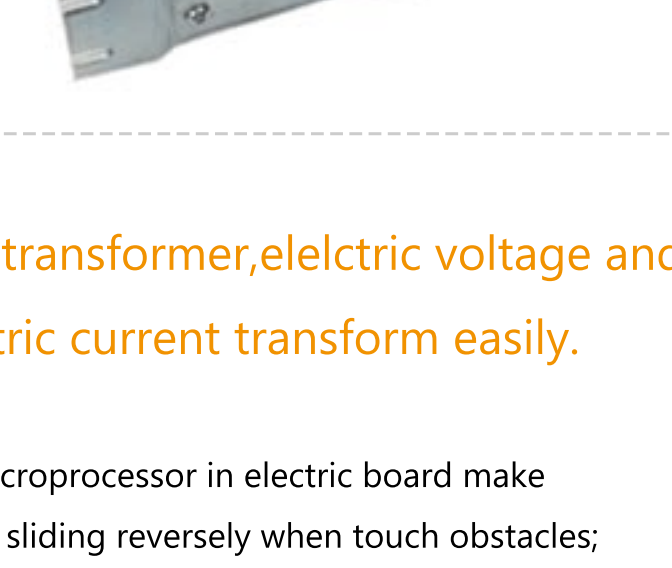


Single leaf door

FEATRES AND ADVANTAGES OF SD280

DC 24V Brushless Motor

Worm gear reduce make it low noise;
Advanced PWM Pulse width control mode providing reliable strong driving force and protect the stable operation of the product;
Full enclosed structure ensure long service life.



Spare transformer, electric voltage and electric current transform easily.

32 bit microprocessor in electric board make the door sliding reversely when touch obstacles;

Opening&closing parameters can be intelligently adjusted by control panel without extra programmer;

Separate transformer with control panel, electric voltage and electric current can transform easily.



One more reducer wheel, more stable and low noise

One more reduce wheel make the teeth belt more stable and low operation noise,
The roller is made of polyurethane, it is durable and light.
The large space between the wheels make little friction between the belt and wheel.



Complete perfect access control system

Only entering the passcode or swiping card on the optional access keypad, people can be entered.

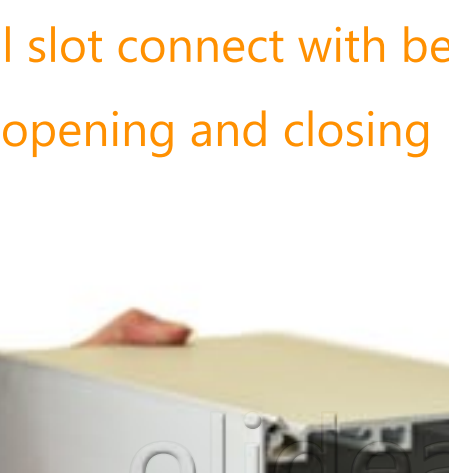
Autodoor can reach the functions of automatic/exit only/partial open/locked and open by the optional five key selector.

Various optional accessories such as foot sensor, touch sensor, push button etc. can be equipped.



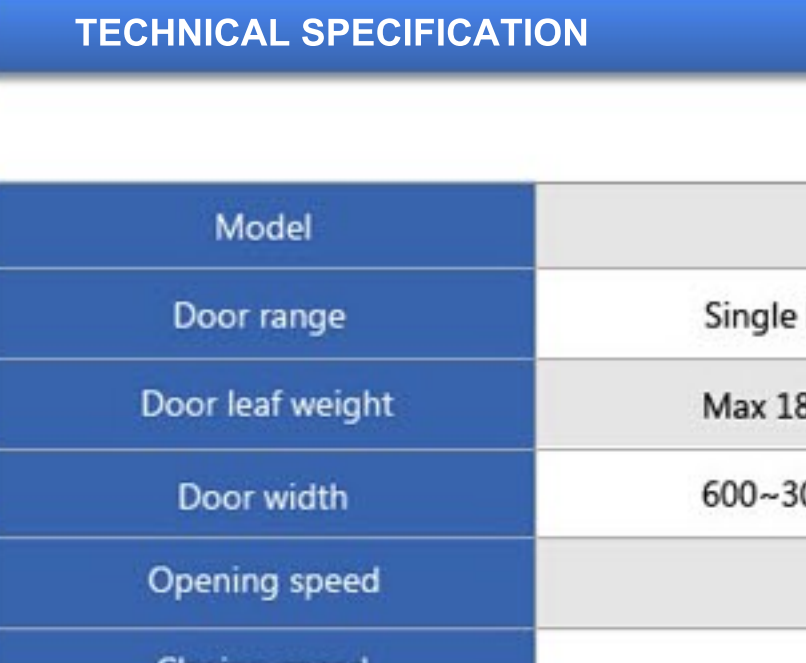
Functions of Safty beam and microwave sensor are perfectly combined.

The optional active radar&infrared safety sensor is combined the function of safety beam and microwave sensor
If install it, no need safety beam and microwave sensor. More intelligent and convenient, only need one wire connection, no need more for safety beam and microwave sensor.



Active radar&infrared safety sensor

Special slot connect with beam and cover Cover opening and closing more convinient



SD 280 cover and beam



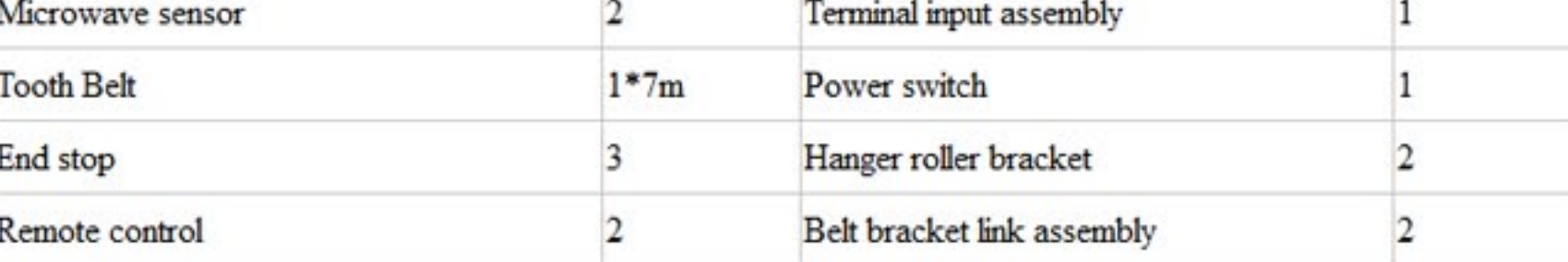
Special slot

SD 280 cover and beam

TECHNICAL SPECIFICATION

Model	SD280	
Door range	Single leaf	Double leaf
Door leaf weight	Max 180kg×1	Max 180kg×2
Door width	600~3000mm	600~1500mm
Opening speed	100~750mm/s (Adjustable)	
Closing speed	100~750mm/s (Adjustable)	
Opening time	0~10 seconds	
Motor	DC24V Brushless DC Servo Motor	
Supply voltage	Input AC110V/220V; 50-60Hz	
Working temperature	-20~50°C	
Working noise	Less than 50 db	

SD280 COMPONENTS INCLUDING

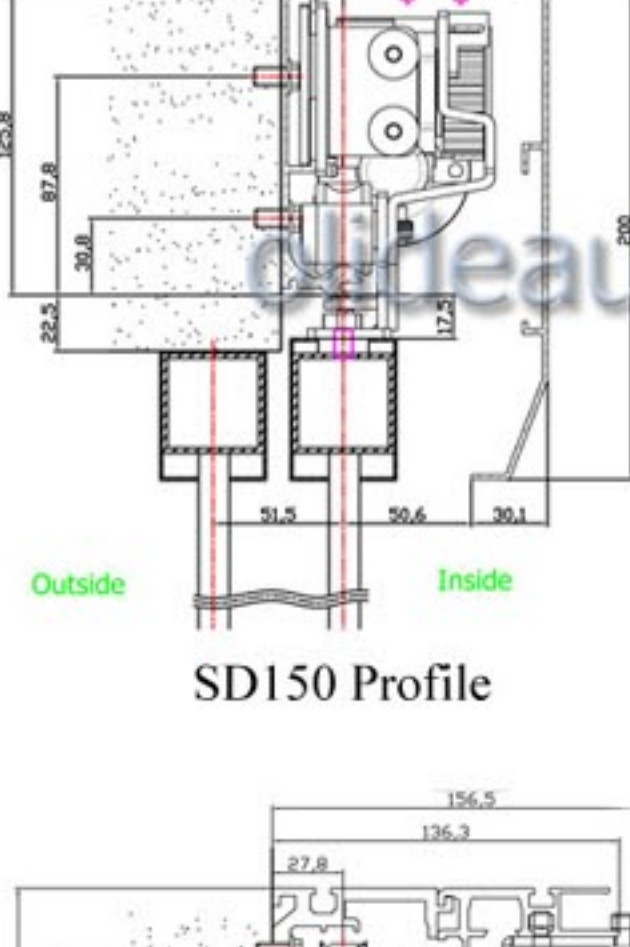


Components	Quantity	Components	Quantity
Control panel	1	Receiver	1
Motor gear box assembly	1	Return Pulley	1
Microwave sensor	2	Terminal input assembly	1
Tooth Belt	1*7m	Power switch	1
End stop	3	Hanger roller bracket	2
Remote control	2	Belt bracket link assembly	2
Device for yaw checking	1	Transformer	1
Transmission rail and cover	2*2.1m	Microwave sensor	2

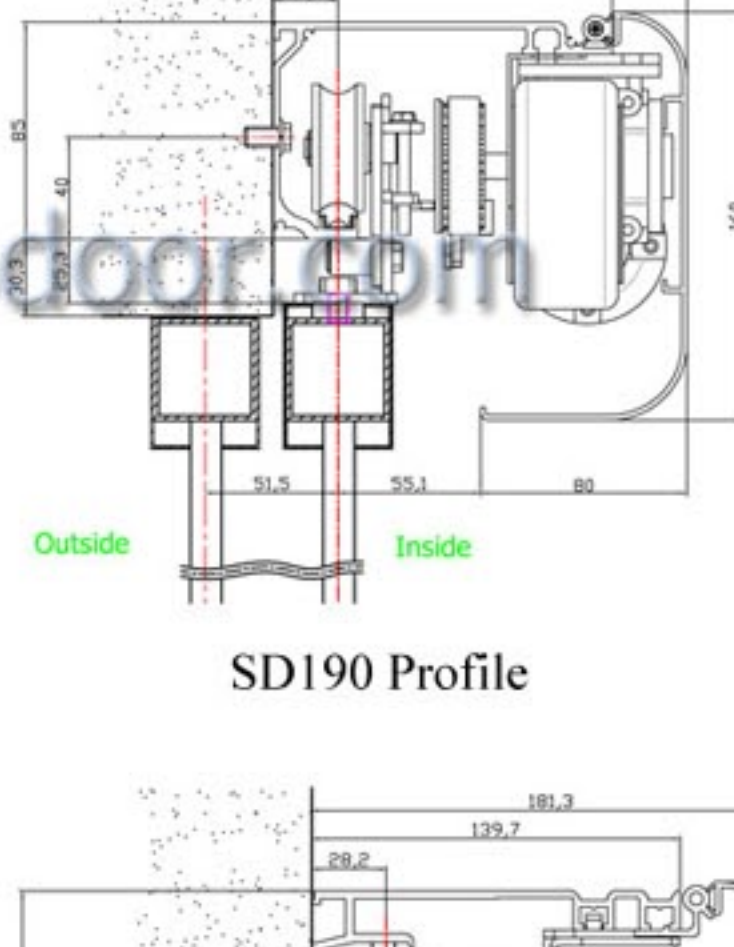
OPTIONAL ACCESSORIES



PROFILE DRAWING



SD150 Profile



SD190 Profile

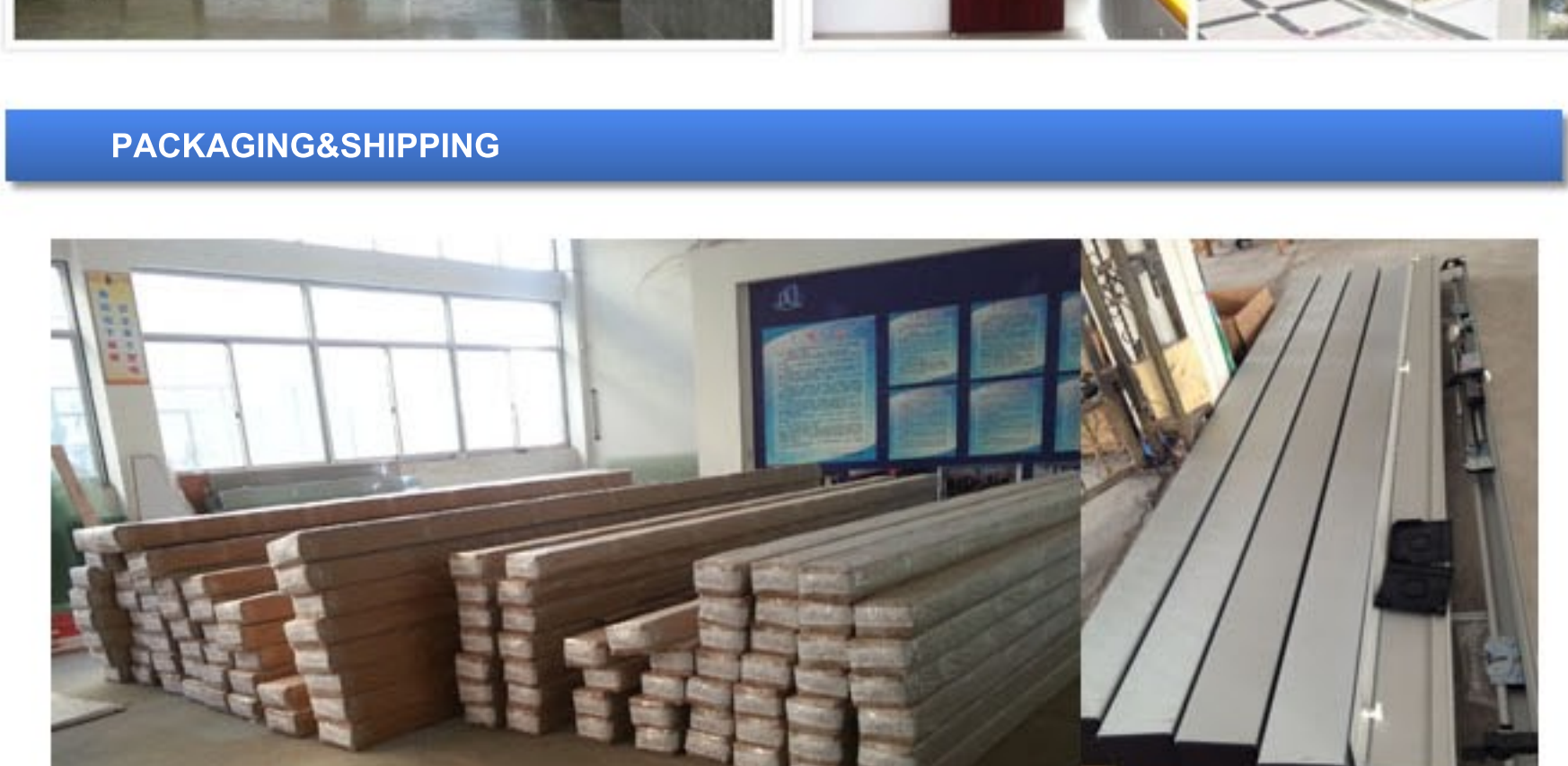


STM20-200 Profile

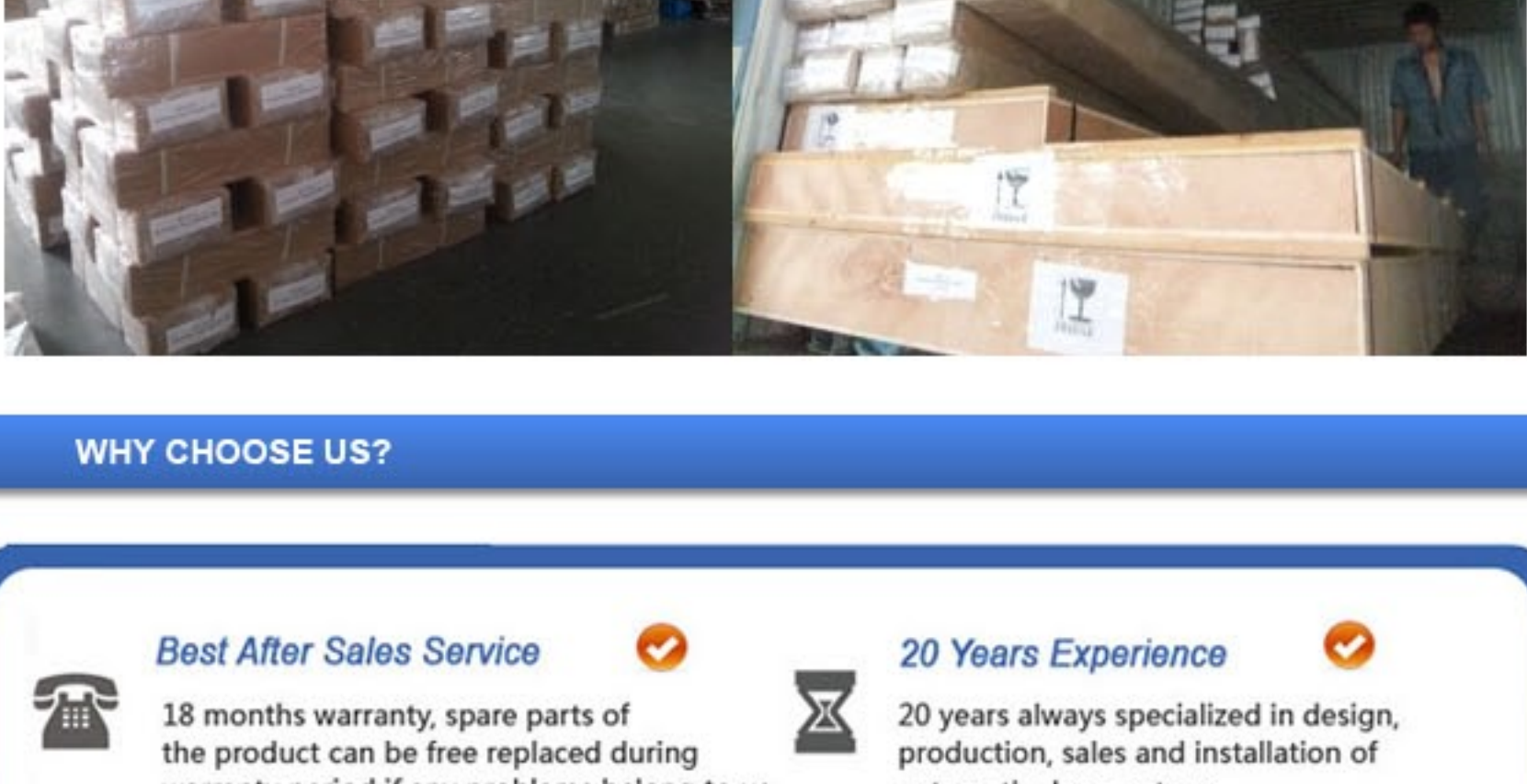


SD280 Profile

PROJECT FROM CUSTOMER



PACKAGING&SHIPPING



WHY CHOOSE US?

- Best After Sales Service** (✓)
18 months warranty, spare parts of the product can be free replaced during warranty period if any problems belong to us.
- 20 Years Experience** (✓)
20 years, always specialized in design, production, sales and installation of automatic door systems.
- Strong Technical Team** (✓)
Adopting Up-to-date Techniques and Technology. Highly Trained Door Experts are the backbone of the company.
- High Delivery Speed** (✓)
3-5 working days shipping out for small order.
- Excellent Quality** (✓)
CE, ISO certification. Excellent DC brushless motor, high wear-resistant qualities wheels and reasonable structure design makes it more stable, quiet, longer life.

CONTACT US

Skype: Chinentech
Tel: +86 571 87641908
Email: jason@olideautodoor.com
MSN: Chinentech@hotmail.com

